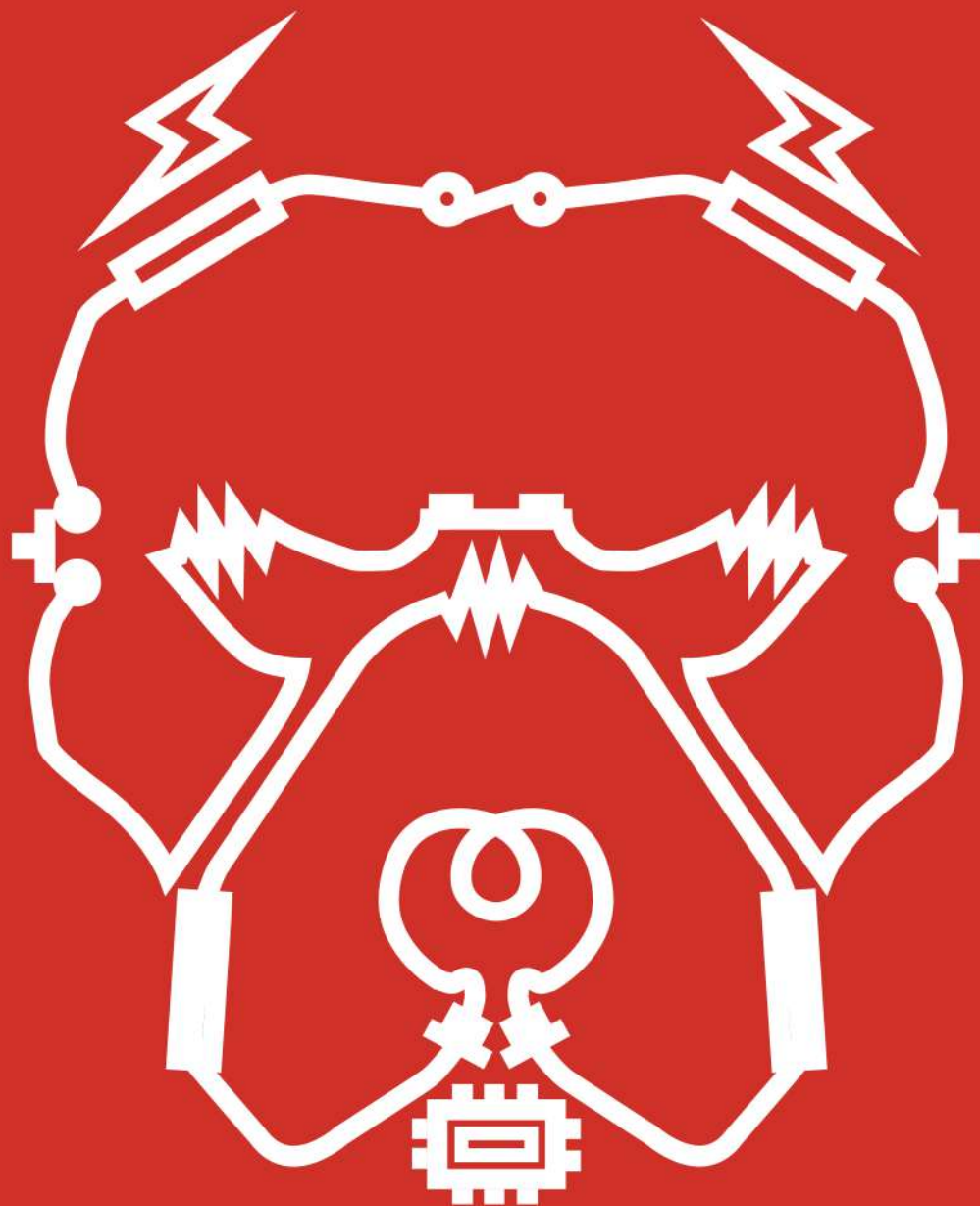


**PITBULL POWER**



**PRODUCT  
CATALOGUE**

LITHIUM-ION BATTERIES

# VISION



## Commitment to Sustainability

Driving a sustainable future through renewable energy, eco-friendly technologies, and reduced fossil fuel reliance for environmental, social, and economic benefits.



## Innovation & Excellence

Advancing lithium-ion technology with high-performance batteries that set new industry standards, excelling in energy density, efficiency, safety, durability, and fast charging to outperform competitors.



## Powering the Clean Energy Revolution

Powering EVs, renewable storage, and clean-tech solutions to cut carbon emissions, promote eco-friendly transport, and drive energy-efficient innovations for a greener planet.

# MISSION



## Leading the Future of Energy

Deliver reliable, eco-friendly lithium-ion batteries. Accelerate renewable energy, electric vehicles, and portable power adoption. Ensure safety, efficiency, and sustainability in every product.



## Shaping a Sustainable World

Drive the shift from fossil fuels to clean energy. Promote solar, wind, and battery-powered systems. Innovate and lead industry advancements.



## Commitment to Excellence & Responsibility

Develop high-performance batteries with minimal environmental impact. Ensure responsible material sourcing and reduce carbon footprint. Combine innovation with sustainability for lasting solutions.

# ABOUT BRAND

## Inhouse R&D

Our in-house R&D drives innovation, ensuring top-quality lithium-ion batteries through advanced materials and manufacturing to meet evolving market demands.

### Key Areas of Focus in Our In-House R&D:



#### Advanced Materials Development:

Our R&D team is dedicated to exploring and optimizing new materials for our battery.



#### Battery Efficiency and Performance:

Our R&D enhances battery efficiency, ensuring maximum energy storage, stability, and durability through continuous testing and innovation over thousands of cycles.



#### Safety and Thermal Management:

We prioritize battery safety with advanced thermal management, enhanced BMS, and safety protocols to prevent overheating, thermal runaway, and external damage.



#### Manufacturing Process Optimization:

Efficiency in the manufacturing process directly impacts both cost and quality. By integrating high quality machines, we are able to improve production speed, reduce defects and ensure quality control.



#### Customized Solutions for Specific Applications:

Our in-house R&D customizes batteries to meet industry-specific needs, from EVs and renewable storage to consumer electronics and beyond.

Our in-house R&D and vertically integrated approach ensure full control over development, enabling efficient delivery of high-quality, reliable, and cost-effective lithium-ion batteries tailored to customer needs.



## State of the Art Manufacturing Facility

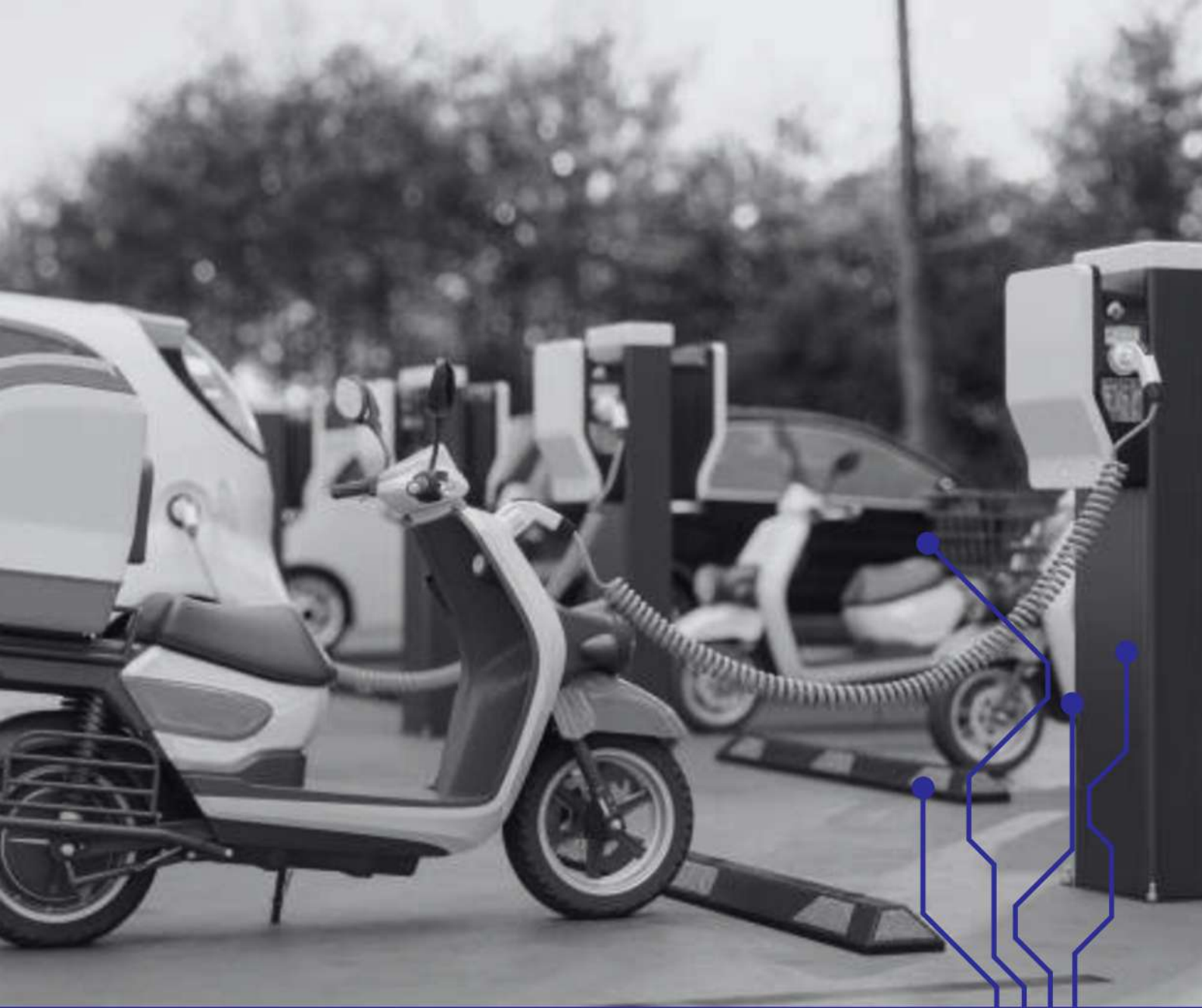
At Pitbull Power, we operate a cutting-edge manufacturing facility that incorporates the latest advancements in battery production technology. Our state-of-the-art plant is designed to meet the highest standards of efficiency, precision, and safety, ensuring that each lithium-ion battery we produce is of the highest quality.

By leveraging the latest innovations in battery technology and manufacturing processes, our facility ensures that we consistently deliver high-performance, long-lasting batteries that meet the needs of industries such as electric vehicles, renewable energy storage, and consumer electronics.

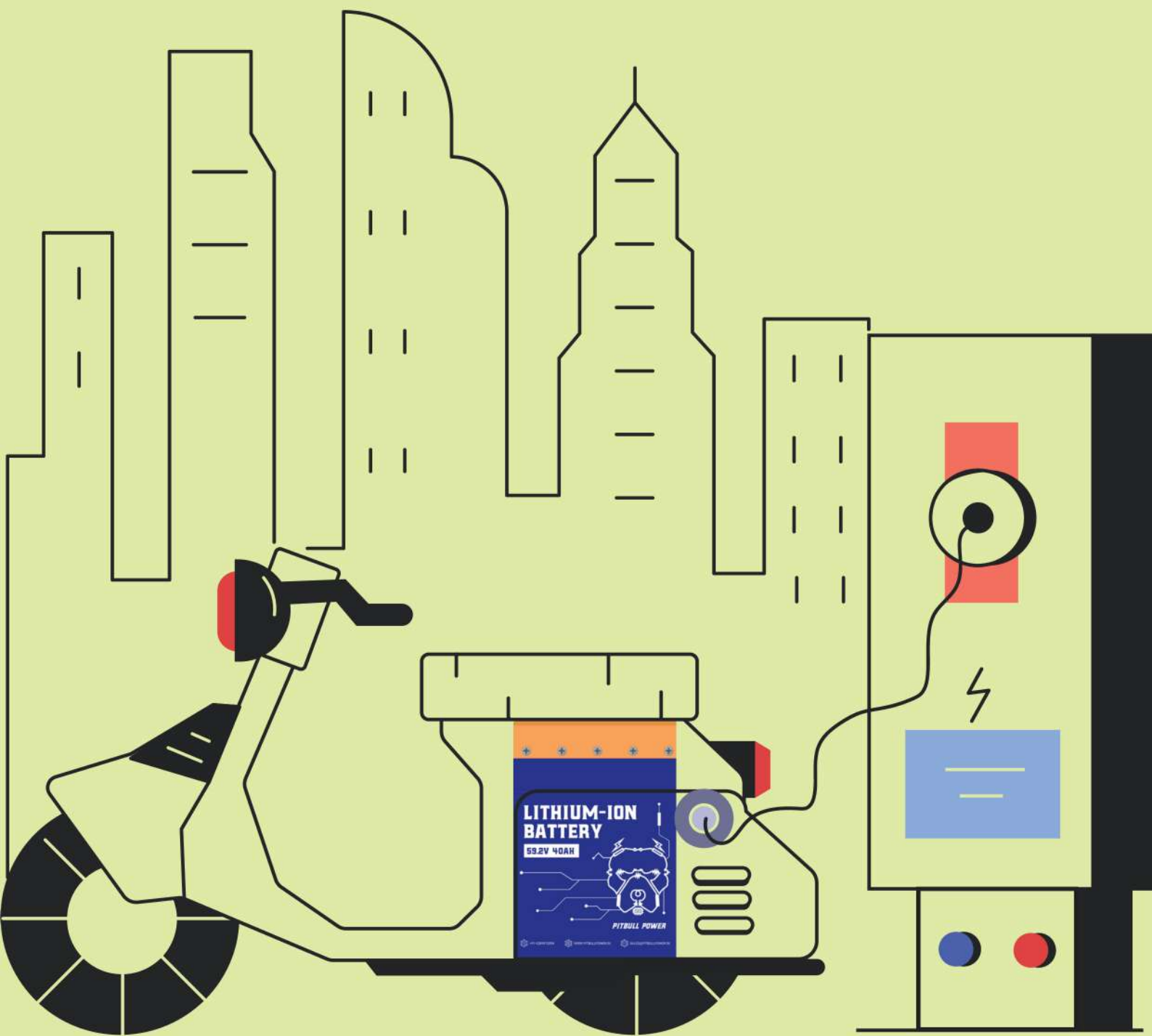
## After-Sales Support

We believe that exceptional customer service doesn't end after the purchase, it's just the beginning. Our after-sales support is designed to ensure that you get the most out of your lithium-ion batteries, with peace of mind throughout their lifecycle. We promise to provide prompt and reliable assistance, whether it's for product installation, troubleshooting or performance optimization.

Our dedicated support team is available to answer any questions and resolve any issues efficiently. We offer comprehensive warranty services, technical support, and product maintenance to ensure your batteries continue to perform at their best. Our goal is to build lasting relationships with our customers by delivering ongoing support that goes beyond the sale, ensuring your complete satisfaction and confidence in our products.



# 2 WHEELER BATTERY



High Energy Density



Long Cycle Life



Fast Charging



Fire Resistant





# 2-WHEELER LFP

**PPN5940TW**

\* Standard as per AIS156



## RATING

Voltage Ratings (Volts) : 59.2  
Battery Capacity (Ah) : 40  
Power Rating (kWh) : 2.368



## COMMUNICATION OPTIONS

- Bluetooth
- CAN (Optional)
- UART/RS485
- IoT (Optional) - Cloud Storage, Real Time Performance Analytics, Battery Swapping Analytics, Asset Tracking, SOC Monitoring, Fleet Management



## ELELCTRICAL PARAMETERS

- Operating Voltage Range (Volts) : 48.0 ~ 67.2  $\pm$  1.0
- Maximum Charging Current : 0.5C
- Maximum Discharge Current : 1C Continuous



## CELL CYCLE LIFE

$\geq 1100$



## BMS PROTECTION

- Over-charge Protection
- Over-discharge Protection
- Over-current Protection
- Over-temperature Protection
- Short-circuit Protection
- Audio & Visual Alarm



## BALANCING MODE

ACTIVE



## CHARGER SPECIFICATION

- Charging Voltage (Volts) : 67.2  $\pm$  0.5
- Charging Current (Amps) : 10.0  $\pm$  0.5
- Charging Mode : Precharge - CC - CV
- CAN Enabled (Optional)
- LED Display (Optional)
- Earth Leakage Protection
- Reverse Polarity Protection
- Failure Sensing



## OPERATING CONDITIONS

- Charging Temperature (Deg.C) : -5 ~ 55
- Discharging Temperature (Deg.C) : -10 ~ 60
- Storage Temperature (Deg.C) : 0 ~ 35



## OUTPUT INTERFACE

SB 75 / SB 50



## WEATHER SEALING RATING

IP67



## FIRE RESISTANCE

YES



## KEY FEATURES

- High Energy Density
- Long Cycle Life
- Fast Charging
- Low Self-Discharge
- Smart Battery Management



# 2-WHEELER LFP

**PPL6030TW**

\* Standard as per AIS156



## RATING

Voltage Ratings (Volts) : 60.8  
Battery Capacity (Ah) : 30  
Power Rating (kWh) : 1.824



## COMMUNICATION OPTIONS

- Bluetooth
- CAN (Optional)
- UART/RS485
- IoT (Optional) - Cloud Storage, Real Time Performance Analytics, Battery Swapping Analytics, Asset Tracking, SOC Monitoring, Fleet Management



## ELELCTRICAL PARAMETERS

- Operating Voltage Range (Volts) :  $52.0 \sim 69.3 \pm 1.0$
- Maximum Charging Current : 0.5C
- Maximum Discharge Current : 1C Continuous



## CELL CYCLE LIFE

$\geq 2000$



## BMS PROTECTION

- Over-charge Protection
- Over-discharge Protection
- Over-current Protection
- Over-temperature Protection
- Short-circuit Protection
- Audio & Visual Alarm



## BALANCING MODE

ACTIVE



## CHARGER SPECIFICATION

- Charging Voltage (Volts) :  $69.0 \pm 0.5$
- Charging Current (Amps) :  $10.0 \pm 0.5$
- Charging Mode : Precharge - CC - CV
- CAN Enabled (Optional)
- LED Display (Optional)
- Earth Leakage Protection
- Reverse Polarity Protection
- Failure Sensing



## OPERATING CONDITIONS

- Charging Temperature (Deg.C) :  $-5 \sim 55$
- Discharging Temperature (Deg.C) :  $-10 \sim 60$
- Storage Temperature (Deg.C) :  $0 \sim 35$



## WEATHER SEALING RATING

IP67



## FIRE RESISTANCE

YES



## KEY FEATURES

- High Energy Density
- Long Cycle Life
- Fast Charging
- Low Self-Discharge
- Smart Battery Management





# 2-WHEELER LFP

**PPL6045TW**

\* Standard as per AIS156



## RATING

Voltage Ratings (Volts) : 60.8  
Battery Capacity (Ah) : 45  
Power Rating (kWh) : 2.736



## COMMUNICATION OPTIONS

- Bluetooth
- CAN (Optional)
- UART/RS485
- IoT (Optional) - Cloud Storage, Real Time Performance Analytics, Battery Swapping Analytics, Asset Tracking, SOC Monitoring, Fleet Management



## ELELCTRICAL PARAMETERS

- Operating Voltage Range (Volts) :  $52.0 \sim 69.3 \pm 1.0$
- Maximum Charging Current : 0.5C
- Maximum Discharge Current : 1C Continuous



## CELL CYCLE LIFE

$\geq 2000$



## BMS PROTECTION

- Over-charge Protection
- Over-discharge Protection
- Over-current Protection
- Over-temperature Protection
- Short-circuit Protection
- Audio & Visual Alarm



## BALANCING MODE

ACTIVE



## CHARGER SPECIFICATION

- Charging Voltage (Volts) :  $69.0 \pm 0.5$
- Charging Current (Amps) :  $10.0 \pm 0.5$
- Charging Mode : Precharge - CC - CV
- CAN Enabled (Optional)
- LED Display (Optional)
- Earth Leakage Protection
- Reverse Polarity Protection
- Failure Sensing



## OPERATING CONDITIONS

- Charging Temperature (Deg.C) :  $-5 \sim 55$
- Discharging Temperature (Deg.C) :  $-10 \sim 60$
- Storage Temperature (Deg.C) :  $0 \sim 35$



## WEATHER SEALING RATING

IP67



## FIRE RESISTANCE

YES



## KEY FEATURES

- High Energy Density
- Long Cycle Life
- Fast Charging
- Low Self-Discharge
- Smart Battery Management

# CUSTOMISATION

We can customise and produce for you!



**E-RIKSHAW BATTERY**



**2-WHEELER BATTERY**



**SOLAR BATTERY**



**ENERGY STORAGE SYSTEM**



**PITBULL  
POWER**

## CONTACT US



### PHONE NO.

+91 92899 73394, +91 124 4469029



### EMAIL

[info@pitbullpower.in](mailto:info@pitbullpower.in)



### WEBSITE

[www.pitbullpower.in](http://www.pitbullpower.in)



### ADDRESS

114, Udyog Vihar, Phase IV, Gurgaon  
122015, Haryana, India